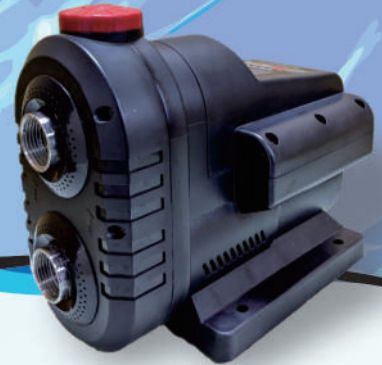




# EMF Frequency conversion constant pressure pump

ISO9001 CE



## Product Usage

- Domestic water supply, whole house pipe pressurization
- Drainage and water supply for gardening and vegetable sheds
- Home car wash booster
- Water heater, solar booster

## Characteristic

- Household water supply pump has a constant pressure control system to maintain constant water pressure
- Water silencer, water shortage protection, outdoor rainproof
- LED human-machine interface, easy to operate

## Conditions of use

- Ambient temperature : MAX. +40°C
- Liquid temperature : +0°C~+100°C
- Applicable liquid: clean water

## Model code

EMF225-1.75 265

TYPE

BORE

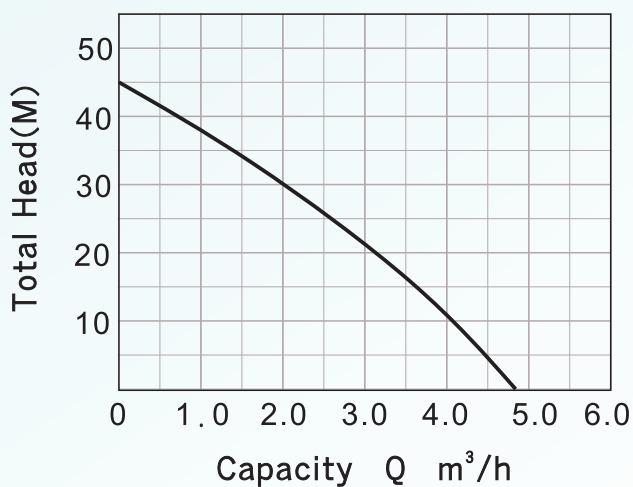
POWER

FREQUENCY  
5: 50Hz

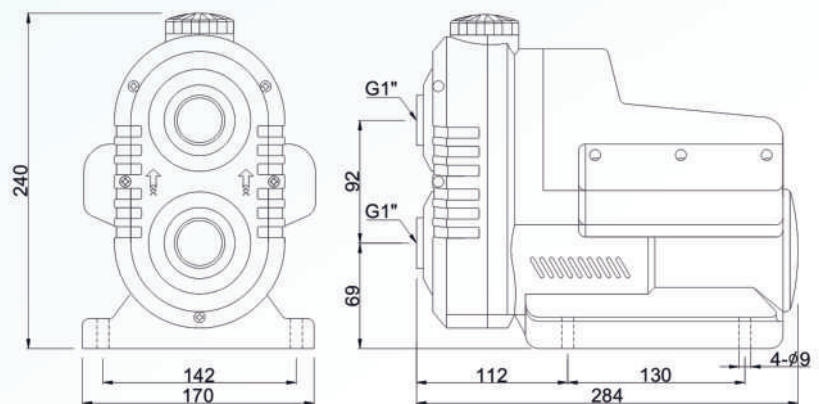
VOLTAGE/PHASE  
6: 220V single-phase

Project	Material
Shell	ABS
Pump body	Stainless steel
Impeller	Stainless steel
Axis	304 welded shaft
Shaft seal	Sic/G
Waterproof level	IP54

## Characteristic curve



## Physical dimension



TYPE	POWER	BORE	VOLTAGE	MAX CAPACITY	CAPACITY	HEAD	MAX HEAD	WEIGHT
	HP(kW)	inch(mm)	V	m³/h	m³/h	M	M	KG
EMF225-1.75 265	1 (0.75)	1" (25)	220	4.8	2	30	45	6.2